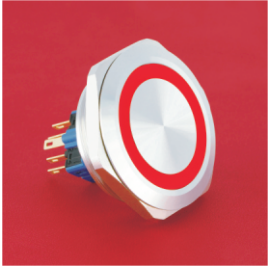


GQ40

Flat Round Actuator+Pin Terminal+Ring Illumination

ONPOW
欧宝龙



GQ40- E / / S /

Contact :
1NO1NC(11)/2NO2NC(22)
Switch function :
Momentary / Latching(Z)
LED Color :

R G Y O B W

LED Voltage :
AC/DC 6V
AC/DC 12V
AC/DC 24V
AC/DC 110V
AC/DC 220V

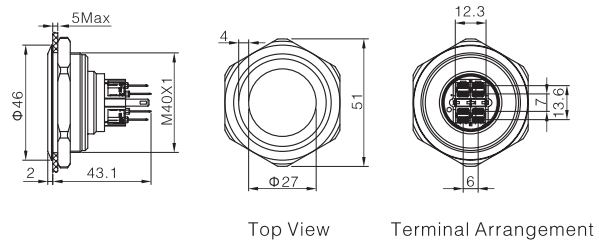
Body :
S Stainless steel

Specifications

- Panel Cutout: Φ 40mm
- Electrical Parameters: Ith:5A, Ui:250V
- Protection Class: IP65 (momentary type can customize for IP67), IK10
- Terminal: Pin Terminal (2.8X0.5mm)
- Switching: Za (Double-break fast-motion contact)
- Panel Thickness: 1 ~ 5mm
- Torque: About 0.6Nm
- Mechanical Life: 1,000,000 cycles
- Electrical Life: 50,000 cycles
- Actuator: Stainless steel
- Body: Stainless steel
- Base: PA
- Actuation Force: About 5N (1NO1NC)
About 7.5N (2NO2NC)
- Actuation Travel: About 2.5mm

RoHS Compliant

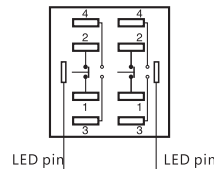
Dimension



Top View

Terminal Arrangement

Terminal Description



1, 2, 3, 4 are one set;
1, 2 are normal closed (NC); 3, 4 are normal opened (NO).
The standard LED terminals have no difference of anode and cathode.
The lamp and switch are relatively independent and can use switch or peripheral circuit to control the lamp state.

Performance Characteristic

Operating Temperature	-25°C~+55°C (no freezing) Keep the air flowing
Operating Humidity	45~85%RH (Non condensing)
Contact Resistance	≤50mΩ
Insulation Resistance	≥1000MΩ
Max. withstanding voltage	1500V, AC50Hz, 60s
Vibration resistance	50Hz, amplitude about 1.2mm
Shock resistance	> 10g
Solder resistance	320°C (or 30W soldering iron) no more than 2s

Switch Rating

Rated Insulation Voltage Ui		250V			
Thermal Current Ith		5A 温度不超过最大额定值所允许的电流			
Rated Voltage		12V	24V	110V	220V
Rated Operation Current	AC 50/60Hz	Resistive load	—	5A	3A
		Inductive load	—	3A	2A
Rated Operation Current	DC	Resistive load	5A	1A	0.5A
		Inductive load	2A	0.2A	0.1A
Contact material		Silver Alloy			

Minimum load: 3VAC/DC, 5mA (Reference)
Application scope depends on operating environment and load type

Lamp Ratings

Lamp Type	Two-way LED lamp (AC/DC)
LED Color	R G Y O B W
Life	40000 hours (Reference)
Rated Voltage	AC/DC 6V, AC/DC 12V, AC/DC 24V, AC/DC 110V, AC/DC 220V
Rated Current	1~15mA
Dropping Way	Inner resistor
Lamp Circuit Diagram	Using AC/DC LED lamp, the terminals have no difference of anode and cathode.
Note: DC LED and other voltage can be made to order.	