

GQ22



GQ25

GQ28



GQ30

Switch Rating

Rated Insulation Voltage Ui		250V			
Thermal Current Ith		5A			
Rated voltage		12V	24V	110V	220V
Rated Operation Current	AC Resistive load	—	—	1A	0.5A
	50/60Hz Inductive load	—	—	0.7A	0.5A
	DC Resistive load	1A	1A	0.2A	—
	DC Inductive load	0.7A	0.7A	0.1A	—
Contact material		Silver Alloy			

Minimum load: 3V AC/DC,5mA (Reference)
Application scope depends on operating environment and load type

Rated Insulation Voltage Ui		250V			
Thermal Current Ith		5A			
Rated voltage		12V	24V	110V	220V
Rated Operation Current	AC Resistive load	—	—	5A	3A
	50/60Hz Inductive load	—	—	3A	2A
	DC Resistive load	5A	5A	1A	0.5A
	DC Inductive load	2A	2A	0.2A	0.1A
Contact material		Silver Alloy			

Minimum load: 3V AC/DC,5mA (Reference)
Application scope depends on operating environment and load type

Specifications

Operating Temperature	-25°C ~ +55°C(no freezing) Maintain good ventilation round the switch
Operating Humidity	45~85%RH(no condensation)
Contact Resistance	≤50mΩ
Insulation Resistance	≥1000MΩ
Dielectric strength	2000V, AC50Hz, 5 seconds
Vibration Resistance	50Hz,amplitude 1.2mmP-P
Shock Resistance	≥10g
Solder Heat Resistance	320°C(no more than 2 seconds)

Declaration of conformity

corresponding standard	Certification	Certificate Authority/Certification Number
EN61058-1:2002+A2:2008		VOV/VT11018806
EN60947-1:2004		CTS/CTS070706-01006-E

Terminal Description

Two sets at most.
C1, NO1, NC1 and C2, NO2, NC2 are one set respectively. C is common used, NO is normal opened, NC is normal closed; +, - are lamp terminals, the standard LED have no difference of anode and cathode; Lamp and switch are relatively independent and can use switch or peripheral circuit to control the lamp state.

(G022)

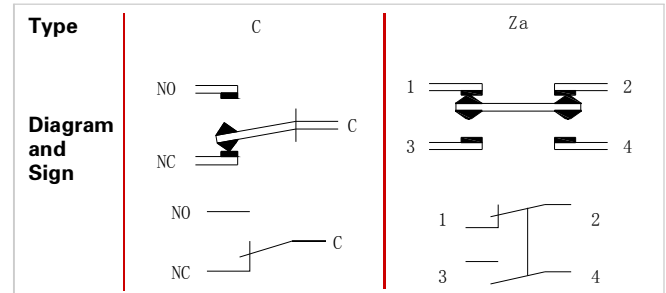
LED Pin

(G025,28,30)

LED Pin

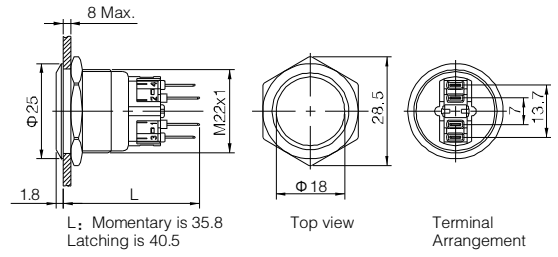
1,2,3,4 are one set; 1,2 are normal closed(NC);3,4 are normal opened(NO).
The standard LED terminals have no difference of anode and cathode.
The lamp and switch are relatively independent and can use switch or peripheral circuit to control the lamp state.

Switching Operation

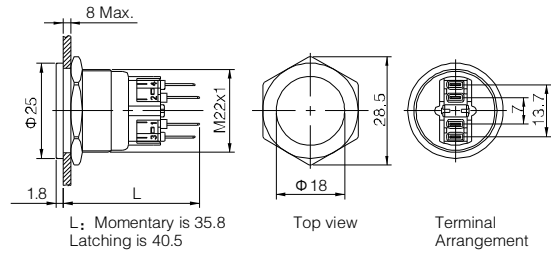




- ◎ Φ22mm Diameter
- ◎ Switch Rating: Ith:5A, Ui:250V
- ◎ Contact Configuration: 1NO 1NC
- ◎ Operation Type(■): Momentary /Latching(Z)
- ◎ The Crust Material(◎): Stainless steel(S)Anodized(A)
- ◎ IP Degree: IP65(IP67 made to order),IK10

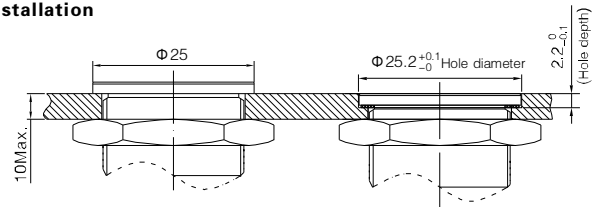


- ◎ Φ22mm Diameter
- ◎ Switch Rating: Ith:5A, Ui:250V
- ◎ Contact Configuration: 1NO 1NC
- ◎ Operation Type(■): Momentary /Latching(Z)
- ◎ The Crust Material(◎): Stainless steel(S)
- ◎ IP Degree: IP65(IP67 made to order),IK10



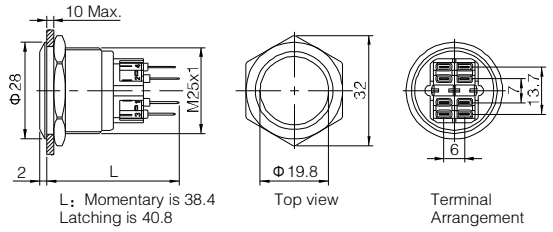
GQ22-11 ■/○		GQ22PF-11 ■/○		
GQ22-11 ■D/△/▲/○		GQ22PF-11 ■D/△/▲/○		
GQ22-11 ■E/△/▲/○		GQ22PF-11 ■E/△/▲/○		
Switching	Za(double-break fast-motion changeover contact)	Material	Button	Stainless steel/Anodized
Panel Thickness	1 ~ 8mm		Body	Stainless steel/Anodized
Mechanical Life	1,000,000 cycles		Base	PA
Electrical Life	50,000 cycles	Operation Pressure	About 4N	
Terminal Type	Pin Terminal(2.8 × 0.5mm)	Operation Travel	About 2.8mm	
Torque	1.0Nm	RoHS	Made to order	

GQ22 Flush Flat Anti-vandal pushbutton Installation

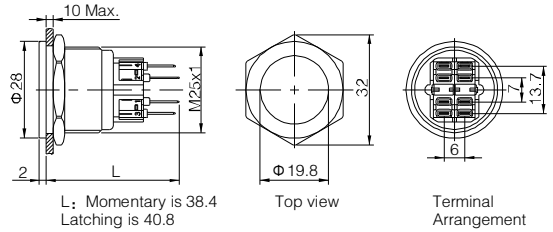




- ◎ Φ25mm Diameter
- ◎ Switch Rating: Ith:5A, Ui:250V
- ◎ Contact Configuration(□): 1NO1NC(11)/2NO2NC(22)
- ◎ Operation Type(■): Momentary / Latching(Z)
- ◎ Crust Material(○): Stainless steel(S)/Anodized(A)
- ◎ IP Degree: IP65(IP67made to order) ,IK10

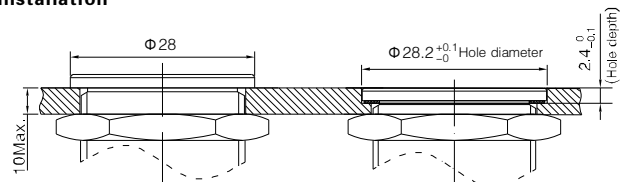


- ◎ Φ25mm Diameter
- ◎ Switch Rating: Ith:5A, Ui:250V
- ◎ Contact Configuration(□): 1NO1NC(11)/2NO2NC(22)
- ◎ Operation Type(■): Momentary / Latching(Z)
- ◎ Crust Material(○): Stainless steel(S)
- ◎ IP Degree: IP65(IP67made to order) ,IK10



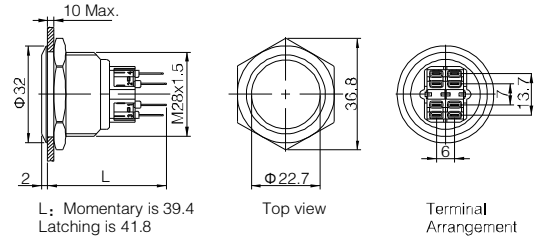
GQ25-□■/○ GQ25-□■D/△/▲/○ GQ25-□■E/△/▲/○		GQ25PF-□■/○ GQ25PF-□■D/△/▲/○ GQ25PF-□■E/△/▲/○		
Switching	Za(double-break fast-motion changeover contact)	Material	Button	Stainless steel/ Anodized
Panel Thickness	1 ~ 8mm		Body	Stainless steel/ Anodized
Mechanical Life	1,000,000 cycles		Base	PA
Electrical Life	50,000 cycles	Operation Pressure	5.5-7N	
Terminal Type	Pin Terminal(2.8 × 0.5mm)	Operation Travel		
Torque	1.2Nm	RoHS	Made to order	

GQ25 Flush Flat Anti-vandal pushbutton Installation

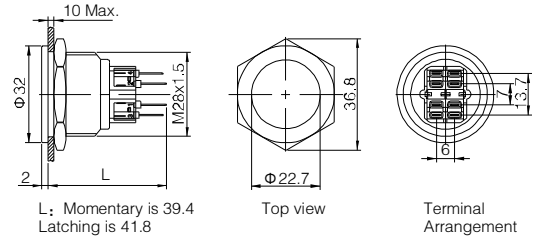




- ⊙ Φ28mm Diameter
- ⊙ Switch Rating: Ith:5A, Ui:250V
- ⊙ Contact Configuration(□): 1NO1NC(11)/2NO2NC(22)
- ⊙ Operation Type(■): Momentary / Latching(Z)
- ⊙ Crust Material(◎): Stainless steel(S)
- ⊙ IP Degree: IP65(IP67made to order) ,IK10

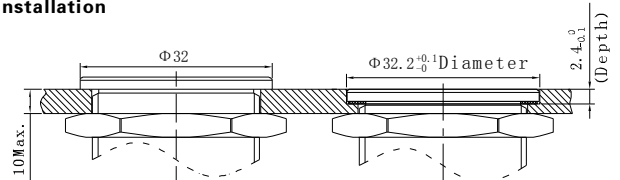


- ⊙ Φ28mm Diameter
- ⊙ Switch Rating: Ith:5A, Ui:250V
- ⊙ Contact Configuration(□): 1NO1NC(11)/2NO2NC(22)
- ⊙ Operation Type(■): Momentary / Latching(Z)
- ⊙ Crust Material(◎): Stainless steel(S)
- ⊙ IP Degree: IP65(IP67made to order) ,IK10



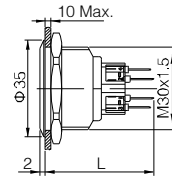
GQ28-□■/○ GQ28-□■D/△/▲/◎ GQ28-□■E/△/▲/◎		GQ28PF-□■/○ GQ28PF-□■D/△/▲/◎ GQ28PF-□■E/△/▲/◎		
Switching	Za(double-break fast-motion changeover contact)	Material	Button	Stainless steel
Panel Thickness	1 ~ 8mm		Body	Stainless steel
Mechanical Life	1,000,000 cycles		Base	PA
Electrical Life	50,000 cycles	Operation Pressure	5.5-7N	
Terminal Type	Pin Terminal(2.8 × 0.5mm)	Operation Travel	About 2.8mm	
Torque	1.4Nm	RoHS	Made to order	

GQ28 Flush Flat Anti-vandal Pushbutton Installation

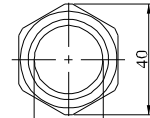




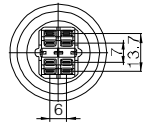
- ⊙ Φ30mm Diameter
- ⊙ Switch Rating: Ith:5A, Ui:250V
- ⊙ Contact Configuration(□): 1NO1NC(11)/2NO2NC(22)
- ⊙ Operation Type(■): Momentary / Latching(Z)
- ⊙ Crust Material(◎): Stainless steel(S)
- ⊙ IP Degree: IP65(IP67made to order) ,IK10



L: Momentary is 39.4
Latching is 41.8



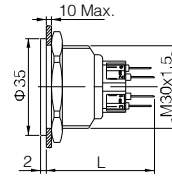
Top View



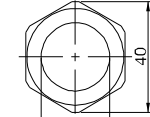
Terminal Arrangement



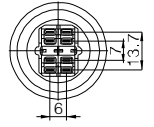
- ⊙ Φ30mm Diameter
- ⊙ Switch Rating: Ith:5A, Ui:250V
- ⊙ Contact Configuration(□): 1NO1NC(11)/2NO2NC(22)
- ⊙ Operation Type(■): Momentary / Latching(Z)
- ⊙ Crust Material(◎): Stainless steel(S)
- ⊙ IP Degree: IP65(IP67made to order) ,IK10



L: Momentary is 39.4
Latching is 41.8



Top View



Terminal Arrangement

GQ30F-□■/◎ GQ30F-□■D/△/▲/◎ GQ30F-□■E/△/▲/◎		GQ30PF-□■/◎ GQ30PF-□■D/△/▲/◎ GQ30PF-□■E/△/▲/◎		
Switching	Za(double-break fast-motion changeover contact)	Material	Button	Stainless steel
Panel Thickness	1 ~ 8mm		Body	Stainless steel
Mechanical Life	1,000,000 cycles		Base	PA
Electrical Life	50,000 cycles	Operation Pressure	5.5-7N	
Terminal Type	Pin Terminal(2.8 × 0.5mm)	Operation Travel	About 2.8mm	
Torque	1.6Nm	RoHS	Made to order	

Gq30 Flush Flat Anti-vandal Pushbutton Installation

