

GQ19

Metal Push Button



Part-number Description

Code of series	Product structure	The Front shape	Contact structure	Lamp type	Connet type	Lamp color and colorized button	Lamp voltage	Crust material
GQ19	S Short type No letter means standard type	B Domed F Flat Round H High Round PF Super Flat Head+ Flat Button PH Super Flat Head+ High Flat Button	10 1NO 01 1NC 1NC can be made to order for some products No letter means signal lamp	D Dot E Ring	J Pin terminal No letter means screw terminal	R Red G Green Y Yellow O Orange B Blue W White N Black	AC/DC 6V AC/DC 12V AC/DC 24V AC/DC 36V Note: Other voltage can be made to order	N Nickel-plated Brass S Stainless steel A Stainless steel Cr Chrome-plated (made to order)

Note: Pls read the catalogue carefully, and choose the right part-number according to the sign.

Specifications

Operating Temperature	-25°C~+55°C(no freezing) keep the air flowing around illuminated pushbutton
Operating Humidity	45~85%RH(no condensation)
Contact Resistance	≤50mΩ
Insulation Resistance	≥1000MΩ
Dielectric Strength	2000V,A C50Hz,5 seconds
Vibration Resistance	50Hz,Amplitude 1.2mm
Shock Resistance	> 10g
Solder Heat Resistance	320°C(or 30W soldering iron) no more than 2 seconds)

Standard and Certification

Standard	Certification Mark	Certificate Authority/Certification Number
EN61058-1:2002+A2:2008	CE	VOV/VT11018807
EN60947-1:2004	CE	CTS/CTS070706-01006-E

Switching Operation

Type	X	Y
Sign		
Diagram		

Note: Using two terminals, double-break and slow-motion contact
Y type NC switch can be made to order for individual product, pls check the product description.

Lamp Ratings

Lamp Type	LED lamp(AC/DC)
Led Color	R G Y O B W
Life	40000 hours (Reference)
Rated Voltage	AC/DC6V,AC/DC12V,AC/DC24V,AC/DC36V
Rated Current	About 15mA
DroppingWay	External resistance
Lamp Circuit Diagram	Using AC/DCLed lamp, the terminals have no difference of anode and cathode

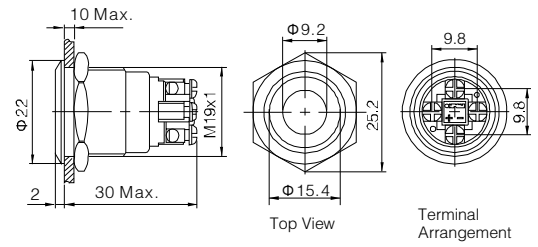


Note: DC LED and other voltage can be made to order.



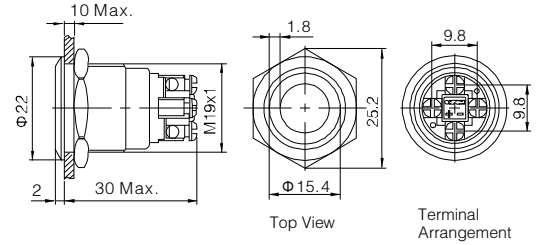
GQ19F-10D/Δ/▲/S

- ⊙ Indicator part number: GQ19F-D/Δ/▲/S
- ⊙ Φ 19mm Diameter
- ⊙ Switch Rating: 2A/36VDC
- ⊙ Contact Configuration: 1NO
- ⊙ Operation Type: Momentary
- ⊙ LED Color(Δ): **R G Y O B W**
- ⊙ LED Voltage(▲): 6V/12V/24V/36V/110V/220V
- ⊙ The Crust Material: Stainless steel
- ⊙ IP Degree: IP65,IK08



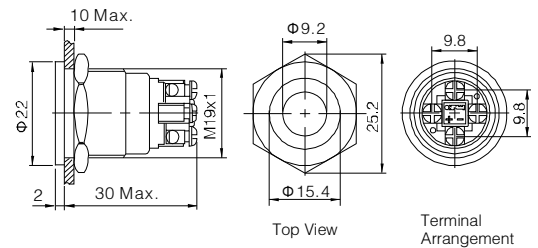
GQ19F-10E/Δ/▲/S

- ⊙ Indicator part number: GQ19F-E/Δ/▲/S
- ⊙ Φ 19mm Diameter
- ⊙ Switch Rating: 2A/36VDC
- ⊙ Contact Configuration: 1NO
- ⊙ Operation Type: Momentary
- ⊙ LED Color(Δ): **R G Y O B W**
- ⊙ LED Voltage(▲): 6V/12V/24V/36V/110V/220V
- ⊙ The Crust Material: Stainless steel
- ⊙ IP Degree: IP65,IK08



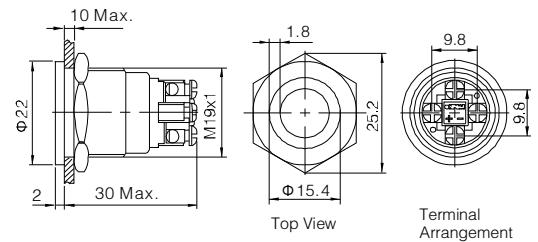
GQ19PF-10D/Δ/▲/S

- ⊙ Indicator part number: GQ19PF-D/Δ/▲/S
- ⊙ Φ 19mm Diameter
- ⊙ Switch Rating: 2A/36VDC
- ⊙ Contact Configuration: 1NO
- ⊙ Operation Type: Momentary
- ⊙ LED Color(Δ): **R G Y O B W**
- ⊙ LED Voltage(▲): 6V/12V/24V/36V/110V/220V
- ⊙ The Crust Material: Stainless steel
- ⊙ IP Degree: IP65,IK08



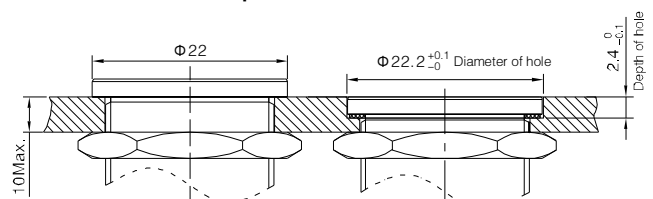
GQ19PF-10E/Δ/▲/S

- ⊙ Indicator part number: GQ19PF-E/Δ/▲/S
- ⊙ Φ 19mm Diameter
- ⊙ Switch Rating: 2A/36VDC
- ⊙ Contact Configuration: 1NO
- ⊙ Operation Type: Momentary
- ⊙ LED Color(Δ): **R G Y O B W**
- ⊙ LED Voltage(▲): 6V/12V/24V/36V/110V/220V
- ⊙ The Crust Material: Stainless steel
- ⊙ IP Degree: IP65,IK08



GQ19F-10D/Δ/▲/S GQ19F-10E/Δ/▲/S		GQ19PF-10D/Δ/▲/S GQ19PF-10E/Δ/▲/S	
Terminal Type	Screw Terminal	Material	Lamp Cover
Switching	x(double-break slow-motion contact)		Body
Panel Thickness	1 ~ 6mm		Base
Torque	0.8Nm	Operation Pressure	About 4N
Mechanical Life	1,000,000 cycles	Operation Travel	About 2.5mm
Electrical Life	200,000 cycles	RoHS	Made to order

Installation of GQ19 super flat switch



GQ19

Flat round actuator+Pin termial+Dot(Ring) illuminated



GQ19F-10D/J/△/▲/S



GQ19F-10E/J/△/▲/S

Led color △:



LED voltage ▲:

- AC/DC 6V
- AC/DC 12V
- AC/DC 24V
- AC/DC 110V
- AC/DC 220V

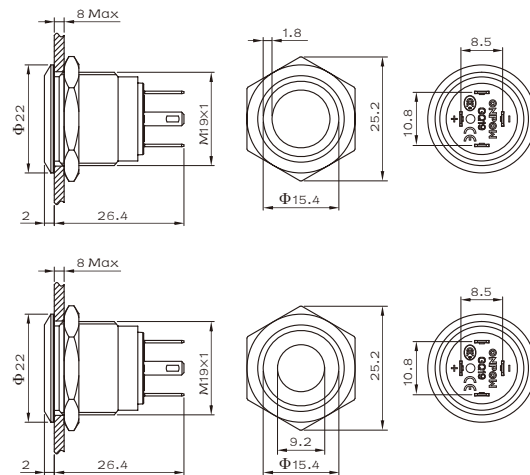
The material of crust:
S Stainless steel

Specifications

- Diameter: Φ 19mm
- Switch Rating: 2A/36VDC
0.5A/220V
- Contact Configuration: 1NO
- Operation Type: Momentary
- Operation Travel: 2.5mm
- Switching: X(double-break slow-motion Operation Travel contact)
- Panel Thickness: 1 ~ 6mm
- Torque: About 0.6Nm
- Mechanical Life: 1,000,000 cycles (36VDC)
- Electrical Life: 50,000 cycles (220V)
- Material of Actuator: Stainless steel
- The Crust Material: Stainless steel
- Material of Base: PA
- Operation Pressure: about 4.8N
- IP Degree: IP65(IP67 made to order),IK08 made to order.

RoHS


Dimension



Performance Characteristic

Operating Temperature	-25°C ~ +55°C (no freezing) Keep the air flowing
Operating Humidity	45~85%RH(Non condensing)
Contact Resistance	$\leq 50m\Omega$
Insulation Resistance	$\geq 1000M\Omega$
Max. withstanding voltage	1500V, AC50Hz, 60s
Vibration resistance	50Hz, amplitude about1.2mm
Shock resistance	>10g
Solder resistance	320°C (or 30W soldering iron) no more than 2s

Lamp Specification

Lamp Type	Two-way LED lamp(AC/DC)
LED Color	R G Y O B W
Life	40000hours(Reference)
Rated Voltage	AC/DC6V, AC/DC12V, AC/DC24V, AC/DC110V,AC/DC220V
Rated Current	5~15mA
Dropping Way	Inner resistor
Lamp Circuit Diagram	Using AC/DCLED lamp, the terminals have no difference of anode and cathode. 
Note:	DC LED and other voltage can be made to order.