

GQ16 TRI-COLOR LED PUSHBUTTON SWITCH

Flat Actuator+Pin Terminal+Tri-color Dot LED



GQ16-10D/J/★RGB/▲/S
(Dual color with 3 wires is available)

Tri-color Display

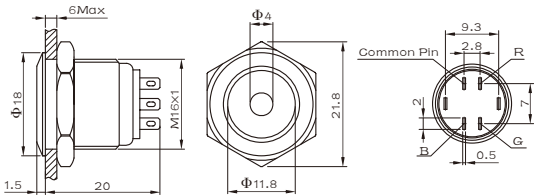
- LED Options★:
- 41 Tri-color (Common Cathode)
 - 42 Tri-color (Common Anode)
- LED Voltage▲ :
- AC/DC 6V
 - AC/DC 12V
 - AC/DC 24V
- Body◎ :
- S Stainless steel

Specifications

- Panel Cutout: $\Phi 16\text{mm}$
Rating: 2A/36VDC
0.5A/220V
Contact Configuration:1NO
Switch Function: Momentary
Terminal: Pin(2x0.5mm)
Switching: X(Double-break Slow-motion contact)
Panel Thickness: 1~6mm
Torque: About 0.6Nm
Mechanical Life: 1,000,000 cycles
Electrical Life: 200,000 cycles(36VDC)
50,000 cycles(220V)
Actuator: Stainless steel
Body: Stainless steel
Base: PA
Actuation Force: About 4N
Actuation Travel: About 2mm
Protection Class: IP65(IP67 can be customized),IK08
Compliant

RoHS

Dimension



Performance Characteristic

Operating Temperature	-25℃~+55℃(no freezing) Keep the air flowing
Operating Humidity	45~85%RH(Non condensing)
Contact Resistance	$\leq 50\text{m}\Omega$
Insulation Resistance	$\geq 1000\text{M}\Omega$
Max. withstanding voltage	1500V, AC50Hz, 60s
Vibration resistance	50Hz, amplitude about1.2mm
Shock resistance	>10g
Solder resistance	320℃ (or 30W soldering iron) no more than 2s

Tri-color Lamp Specification

Lamp Type	Unidirection Tri-color LED
LED Color	R G B
Life	40000hours(Reference)
Rated Voltage	Without Resistor R 1.8V, G 2.8V, B 2.8V With internal resistor: DC6V, DC12V, DC24V
Rated Current	5~15mA
Lamp Circuit Diagram	<p>Common Cathode</p> <p>Common Anode</p> <p>Using unidirection LED lamp, need distinguish anode and cathode, Using inner resistor, do not need connect outer resistor. (Three resistors need connected outside)</p>

GQ16 TRI-COLOR LED PUSHBUTTON SWITCH

Flat actuator+pin terminal+tri-color ring LED



GQ16-10E/J/★RGB/▲/◎
(Dual color with 3 wires is available)

Tri-color Display

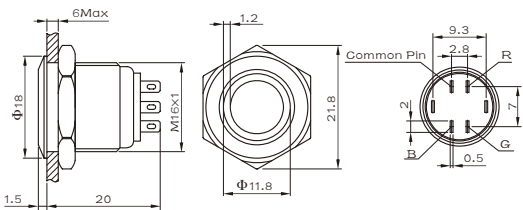
- LED Options★:
- 41 Tri-color (Common Cathode)
 - 42 Tri-color (Common Anode)
- LED Voltage▲ :
- AC/DC 6V
 - AC/DC 12V
 - AC/DC 24V
- Body◎ :
- S Stainless steel
 - A Aulminum (black)

Specifications

- Panel Cutout: $\Phi 16\text{mm}$
Rating: 2A/36VDC
0.5A/220V
Contact Configuration:1NO
Switch Function: Momentary
Terminal: Pin(2x0.5mm)
Switching: X(Double-break Slow-motion contact)
Panel Thickness: 1~6mm
Torque: About 0.6Nm
Mechanical Life: 1,000,000 cycles
Electrical Life: 200,000 cycles(36VDC)
50,000 cycles(220V)
Actuator: Stainless steel/Aulminum (black)
Body: Stainless steel/Aulminum (black)
Base: PA
Actuation Force: About 4N
Actuation Travel: About 2mm
Protection Class: IP65(IP67 can be customized),IK08
Compliant

RoHS

Dimension



Performance Characteristic

Operating Temperature	-25℃~+55℃(no freezing) Keep the air flowing
Operating Humidity	45~85%RH(Non condensing)
Contact Resistance	$\leq 50\text{m}\Omega$
Insulation Resistance	$\geq 1000\text{M}\Omega$
Max. withstanding voltage	1500V, AC50Hz, 60s
Vibration resistance	50Hz, amplitude about1.2mm
Shock resistance	>10g
Solder resistance	320℃ (or 30W soldering iron) no more than 2s

Tri-color Lamp Specification

Lamp Type	Unidirection Tri-color LED
LED Color	R G B
Life	40000hours(Reference)
Rated Voltage	Without Resistor R 1.8V, G 2.8V, B 2.8V With internal resistor: DC6V, DC12V, DC24V
Rated Current	5~15mA
Lamp Circuit Diagram	<p>Common Cathode</p> <p>Common Anode</p> <p>Using unidirection LED lamp,need distinguish anode and cathode,Using inner resistor,do not need connect outer resistor.(Three resistors need connected outside)</p>