

GQ16

Metal Push Button



Part-number Description

GQ16	★	□	◆	◎
Code of series	The Front shape	Contact structure	Connet type	Crust material
	B Domed F Flat Round H High Round PF Super Flat Head + Flat Button PH Super Flat Head + High Flat Button	10 1NO 01 1NC 1NC can be made to order for some products No letter means signal lamp	J Pin terminal L Long Pin Terminal No letter means screw terminal	N Nickel-plated Brass S Stainless steel A Stainless steel PC Engineering plastic Cr Chrome-plated (made to order)

Note: Pls read the catalogue carefully, and choose the right part-number according to the sign.

Specifications

Operating Temperature	-25°C~+55°C(no freezing) keep the air flowing around illuminated pushbutton
Operating Humidity	45~85%RH(no condensation)
Contact Resistance	≤50mΩ
Insulation Resistance	≥1000MΩ
Dielectric Strength	2000V, A C50Hz, 5 seconds
Vibration Resistance	50Hz, Amplitude 1.2mm
Shock Resistance	> 10g
Solder Heat Resistance	320°C(or 30W soldering iron) no more than 2 seconds)

Standard and Certification

Standard	Certification Mark	Certificate Authority /Certificate Number
EN61058-1:2002+A2:2008	CE	VOV/VT11018807
EN60947-1:2004	CE	CTS/CTS070706-01006-E

Switching Operation

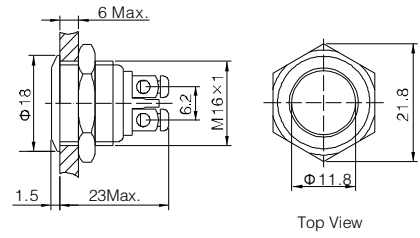
Type	X	Y
Sign		
Diagram		

Note: Using two terminals, double-break and slow-motion contact

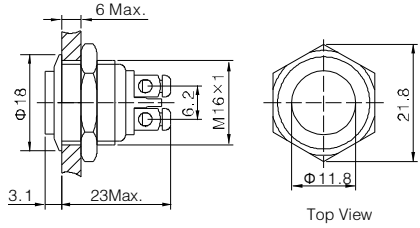
Y type NC switch can be made to order for individual product, pls check the product description.



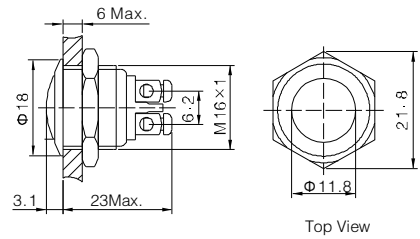
- ◎ Φ 16mm Diameter
- ◎ Switch Rating:2A/36VDC
- ◎ Contact Configuration: 1NO(1NC can be made to order)
- ◎ Operation Type: Momentary
- ◎ The Front Shape: Flat Round
- ◎ The Crust Material(◎): Stainless steel(S)/ Nickel plated Brass(N)/Aluminium alloy black anodized(A)
- ◎ IP Degree: IP65,IK08



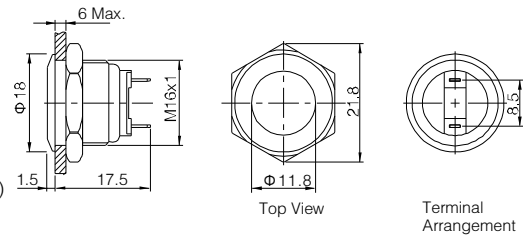
- ◎ Φ 16mm Diameter
- ◎ Switch Rating:2A/36VDC
- ◎ Contact Configuration: 1NO(1NC can be made to order)
- ◎ Operation Type: Momentary
- ◎ The Front Shape: High Round
- ◎ The Crust Material(◎): Stainless steel(S)/ Nickel plated Brass(N)/Aluminium alloy black anodized(A)
- ◎ IP Degree: IP65,IK08



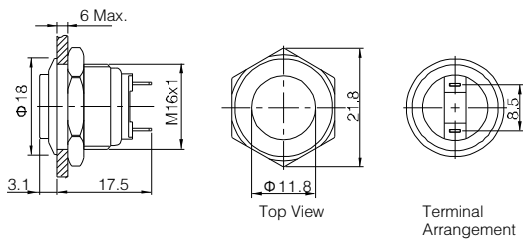
- ◎ Φ 16mm Diameter
- ◎ Switch Rating:2A/36VDC
- ◎ Contact Configuration: 1NO(1NC can be made to order)
- ◎ Operation Type: Momentary
- ◎ The Front Shape: Domed
- ◎ The Crust Material(◎): Stainless steel(S)/ Nickel plated Brass(N)/Aluminium alloy black anodized(A)
- ◎ IP Degree: IP65,IK08



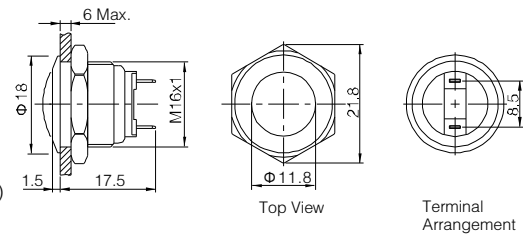
- ◎ Φ 16mm Diameter
- ◎ Switch Rating:2A/36VDC
- ◎ Contact Configuration: 1NO
- ◎ Operation Type: Momentary
- ◎ The Front Shape: Flat Round
- ◎ The Crust Material(◎): Stainless steel(S)/ Nickel plated Brass(N)/Aluminium alloy black anodized(A)
- ◎ IP Degree: IP65,IK08



- ◎ Φ 16mm Diameter
- ◎ Switch Rating:2A/36VDC
- ◎ Contact Configuration: 1NO
- ◎ Operation Type: Momentary
- ◎ The Front Shape: High Round
- ◎ The Crust Material(◎): Stainless steel(S)/ Nickel plated Brass(N)/Aluminium alloy black anodized(A)
- ◎ IP Degree: IP65,IK08



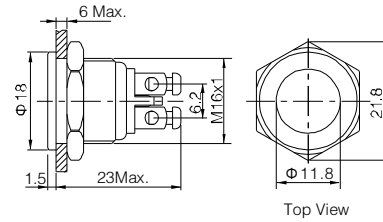
- ◎ Φ 16mm Diameter
- ◎ Switch Rating:2A/36VDC
- ◎ Contact Configuration: 1NO
- ◎ Operation Type: Momentary
- ◎ The Front Shape: Domed
- ◎ The Crust Material(◎): Stainless steel(S)/ Nickel plated Brass(N)/Aluminium alloy black anodized(A)
- ◎ IP Degree: IP65,IK08



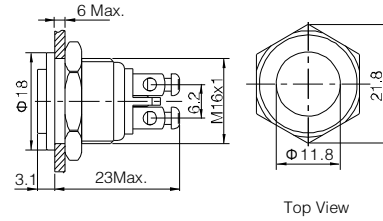
GQ16F-10/◎ GQ16H-10/◎ GQ16B-10/◎		Material	Button	Stainless steel/ Aluminium alloy black anodized	GQ16F-10/J/◎ GQ16H-10/J/◎ GQ16B-10/J/◎		Material	Button	Stainless steel/ Aluminium alloy black anodized
Terminal Type	Screw Terminal		Operation Pressure	About 4N	Terminal Type	Pin Terminal(2×0.5mm)		Operation Pressure	About 4N
	Switching		X(double-break slow-motion contact)	Operation Travel		About 2.5mm			Switching
Panel Thickness	1 ~ 6mm	Torque	0.6Nm	Panel Thickness	1 ~ 6mm	Torque	0.6Nm		
Mechanical Life	1,000,000 cycles		Mechanical Life	1,000,000 cycles					
Electrical Life	200,000 cycles	RoHS	Made to order	Electrical Life	200,000 cycles	RoHS	Made to order		



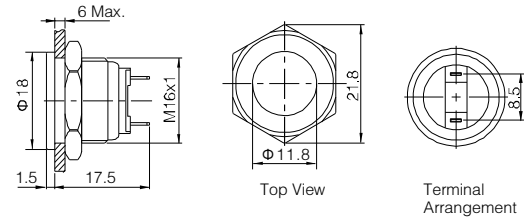
- ◎ Φ 16mm Diameter
- ◎ Switch Rating:2A/36VDC
- ◎ Contact Configuration: 1NO(1NC can be made to order)
- ◎ Operation Type: Momentary
- ◎ The Front Shape: Flat Round
- ◎ The Crust Material(◎): Stainless steel(S)/ Nickel plated Brass(N)
- ◎ IP Degree: IP65,IK08



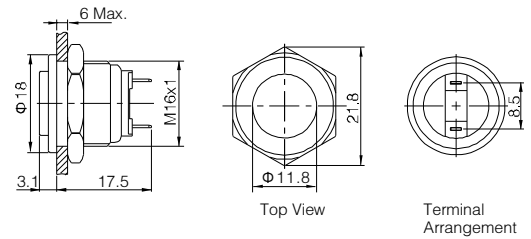
- ◎ Φ 16mm Diameter
- ◎ Switch Rating:2A/36VDC
- ◎ Contact Configuration: 1NO(1NC can be made to order)
- ◎ Operation Type: Momentary
- ◎ The Front Shape: High Round
- ◎ The Crust Material(◎): Stainless steel(S)/ Nickel plated Brass(N)
- ◎ IP Degree: IP65,IK08



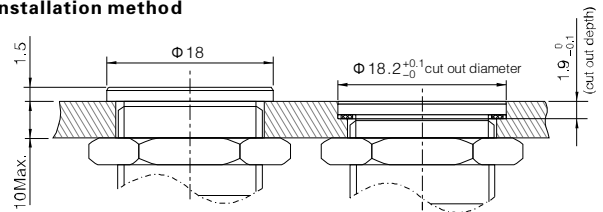
- ◎ Φ 16mm Diameter
- ◎ Switch Rating:2A/36VDC
- ◎ Contact Configuration: 1NO(1NC can be made to order)
- ◎ Operation Type: Momentary
- ◎ The Front Shape: Flat Round
- ◎ The Crust Material(◎): Stainless steel(S)/ Nickel plated Brass(N)
- ◎ IP Degree: IP65,IK08



- ◎ Φ 16mm Diameter
- ◎ Switch Rating:2A/36VDC
- ◎ Contact Configuration: 1NO(1NC can be made to order)
- ◎ Operation Type: Momentary
- ◎ The Front Shape: High Round
- ◎ The Crust Material(◎): Stainless steel(S)/ Nickel plated Brass(N)
- ◎ IP Degree: IP65,IK08



GQ16 super flat anti-vandal metal push button installation method

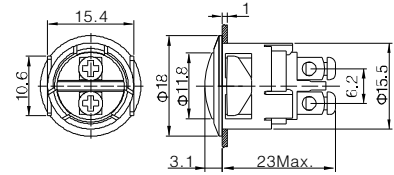


GQ16PF-10/◎ GQ16PH-10/◎		Material	Button	Stainless steel	GQ16PF-10/J/◎ GQ16PH-10/J/◎		Material	Button	Stainless steel/Nickel plated Brass
			Body	Stainless steel/Nickel plated Brass				Body	Stainless steel/Nickel plated Brass
			Base	PBT				Base	PBT
Terminal Type	Screw Terminal	Operation Pressure	About 4N	Terminal Type	Pin Terminal(2×0.5mm)	Operation Pressure	About 4N		
Switching	X(double-break slow-motion contact)	Operation Travel	About 2.5mm	Switching	X(double-break slow-motion contact)	Operation Travel	About 2.5mm		
Panel Thickness	1 ~ 6mm			Panel Thickness	1 ~ 6mm				
Torque	0.6Nm			Torque	5 ~ 14Nm				
Mechanical Life	1,000,000 cycles			Mechanical Life	1,000,000 cycles				
Electrical Life	200,000 cycles	RoHS	Made to order	Electrical Life	200,000 cycles	RoHS	Made to order		



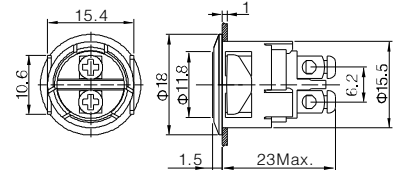
GQ16B-10/PC

- ⊙ Φ 16mm Diameter
- ⊙ Switch Rating:2A/36VDC
- ⊙ Contact Configuration: 1NO (1NC can be made to order)
- ⊙ Operation Type: Momentary
- ⊙ The Front Shape: Domed
- ⊙ The Crust Material(⊙): UV protection PC
- ⊙ IP Degree: IP65,IK02



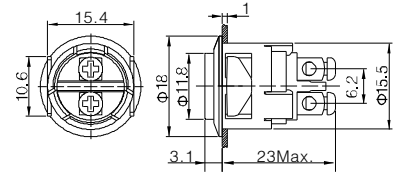
GQ16F-10/PC

- ⊙ Φ 16mm Diameter
- ⊙ Switch Rating:2A/36VDC
- ⊙ Contact Configuration: 1NO (1NC can be made to order)
- ⊙ Operation Type: Momentary
- ⊙ The Front Shape: Flat Round
- ⊙ The Crust Material(⊙): UV protection PC
- ⊙ IP Degree: IP65,IK02



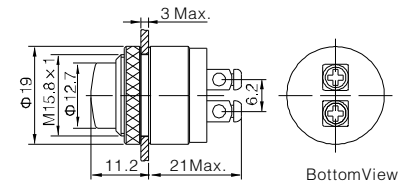
GQ16H-10/PC

- ⊙ Φ 16mm Diameter
- ⊙ Switch Rating:2A/36VDC
- ⊙ Contact Configuration: 1NO (1NC can be made to order)
- ⊙ Operation Type: Momentary
- ⊙ The Front Shape: High Flat Round
- ⊙ The Crust Material(⊙): UV protection PC
- ⊙ IP Degree: IP65,IK02



GQ16M-10

- ⊙ Φ 16mm Diameter
- ⊙ Switch Rating:2A/36VDC
- ⊙ Contact Configuration: 1NO
- ⊙ Operation Type: Momentary
- ⊙ Panel Thickness: 1~3mm
- ⊙ The Crust Material(⊙): Brass(Bronze-coloured)
- ⊙ IP Degree: IP40,IK09



GQ16B-10/PC GQ16F-10/PC GQ16H-10/PC		Material	Button	Stainless steel	GQ16M-10		Material	Button	Brass(Bronze-coloured)
Terminal Type	Screw Terminal <th>Body</th> <td>UV protection PC</td> <th>Terminal Type</th> <td>Screw Terminal <th>Body</th> <td>Brass(Bronze-coloured)</td> </td>		Body	UV protection PC	Terminal Type	Screw Terminal <th>Body</th> <td>Brass(Bronze-coloured)</td>		Body	Brass(Bronze-coloured)
Switching	X(double-break slow-motion contact) <th>Base</th> <td>PBT</td> <th>Switching</th> <td>X(double-break slow-motion contact) <th>Base</th> <td>PBT</td> </td>		Base	PBT	Switching	X(double-break slow-motion contact) <th>Base</th> <td>PBT</td>		Base	PBT
Operation Pressure	About 4N	Operation Pressure	About 8N						
Operation Travel	About 2.5mm	Operation Travel	About 3mm						
Panel Thickness	1mm	Panel Thickness	1 ~ 3mm						
Mechanical Life	1,000,000 cycles	Torque	0.6Nm						
Electrical Life	200,000 cycles	Mechanical Life	1,000,000 cycles						
		Electrical Life	200,000 cycles						
		RoHS	Made to order	RoHS	Made to order				