

# GQ12-A

12mm Short body  
Metal Pushbutton Switch



## Part-number Description

GQ12	-	A	★	□	◇	/	J	/	△	/	▲	/	◎
Code of series	Code Name	The Front Shape F Round H High Round	Contact Structure 10 1NO	Lamp Type D Dot E Ring	Terminal Type J Pin Terminal	LED color R Red G Green Y Yellow O Orange B Blue W White	LED voltage AC/DC 6V AC/DC 12V AC/DC 24V 6, 12, 24VAC/DC are with inner resistor, other voltage need to connect an outer resistor.	The Crust Material S Stainless Steel					

Note: Pls read the catalogue carefully, and choose the right part-number according to the sign.

## Specifications

Operating Temperature	-25℃~+55℃(no freezing) Keep the switch air circulating well
Operating Humidity	45~85%RH(no condensing)
Contact Resistance	≤50MΩ
Insulation Resistance	≥1000MΩ
Dielectric Strength	1500V, AC 50Hz, 5 seconds
Vibration Resistance	50Hz, Amplitude 1.2mm
Shoch resistance	> 10g
Solder Heat Resistance	320℃(or 30W soldering iron) no more than 2 seconds

## Switching Operation

Type	X
Signal	
Diagram	

Note: Using two terminals, double-break and slow-motion contact

## Lamp Ratings

Lamp Type	LED lamp(AC/DC)
LED color	R G Y O B W
Life	40000 hours(Reference)
Rated Voltage	AC/DC6V, AC/DC12V, AC/DC24V, AC/DC36V
Rated Current	About 15mA
Dropping Way	Outer Resistance except 6V, 12V, 24V
Lamp Circuit Diagram	Using AC/DC lamp, the terminals have no difference of anode and cathode. 

Note: DC LED and other voltage can be made to order.

## Terminal Description

	+,- are lamp terminals, the standard LED have no difference of anode and cathode; Lamp and switch are relatively independent and can use switch or peripheral circuit to control the lamp state.
--	--

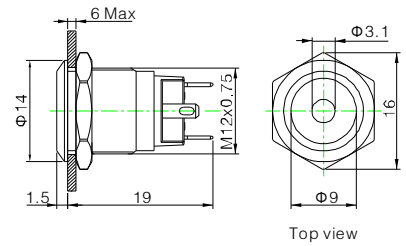
## Lamp Bead Configuration

Lamp parameter	Lamp Type	Dot/Ring(LED)			
	Lamp Color	R Y O	G B W		
	Rated Voltage Ue	AC/DC 1.8V		AC/DC 2.8V	
	Rated Current Ie	15mA			
	Life	40000 hours			
resistor configuration (Recommended value)	Voltage U	6V	12V	24V	36V
	Current Limiting Resistance R	R Y O : 270Ω, 1/4W ; 820Ω, 1/2W ; 1.5KΩ, 1W ; 2.7KΩ, 1W	G B W : 220Ω, 1/4W ; 680Ω, 1/2W ; 1.5KΩ, 1W ; 2.7KΩ, 1W		

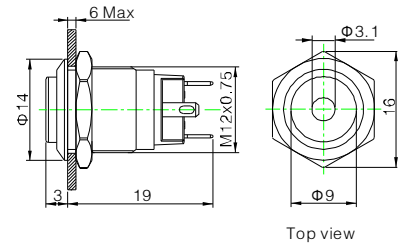
## Standard and Certification

Standard	Certification Mark	Certificate Authority/Certification Number
EN61058-1:2002+A2:2008	CE	VOV/VT11018807
EN60947-1:2004	CE	CTS/CTS070706-01006-E

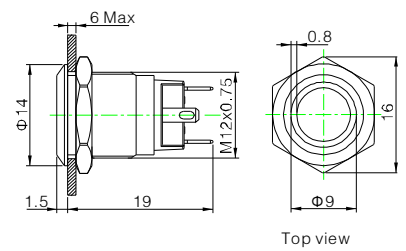
GQ12-AF-10D/J/Δ/▲/S  
Stainless steel



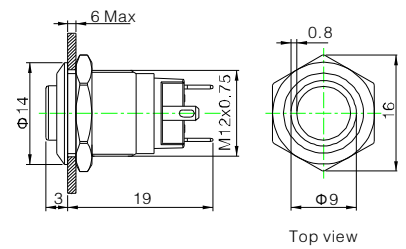
GQ12-AH-10D/J/Δ/▲/S  
Stainless steel



GQ12-AF-10E/J/Δ/▲/S  
Stainless steel



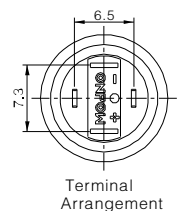
GQ12-AH-10E/J/Δ/▲/S  
Stainless steel



- ⊙ Diameter: Φ12mm
- ⊙ Switch Rating: 2A/36VDC
- ⊙ Contact Configuration: 1NO
- ⊙ Operation Type: Momentary
- ⊙ LED Color(Δ): **R G Y O B W**
- ⊙ LED Voltage(▲): 6V/12V/24V
- ⊙ IP Degree: IP67(FP),IK08

- ⊙ Terminal Type: Pin Terminal(2×0.5mm)
- ⊙ Switching: x(double-break and slow-motion contact)
- ⊙ Panel Thickness: 1~6mm
- ⊙ Torque: About 0.6Nm
- ⊙ Mechanical Life: 500,000 cycles
- ⊙ Electrical Life: 200,000 cycles

- ⊙ Material of Actuator: Stainless steel
- ⊙ The Crust Material: Stainless steel
- ⊙ Material of Base: PA
- ⊙ Operation Pressure: 2.5~4N
- ⊙ Operation Travel: About 1.5mm
- ⊙ **RoHS** Made to order



# GQ12-A

Flat Round Actuator+Pin Terminal+Power Symbol



GQ12-AF-10DT/△/▲/S

LED Color△:



LED Voltage▲:

AC/DC 6V  
AC/DC 12V  
AC/DC 24V

The crust material:  
S stainless steel

## Specifications

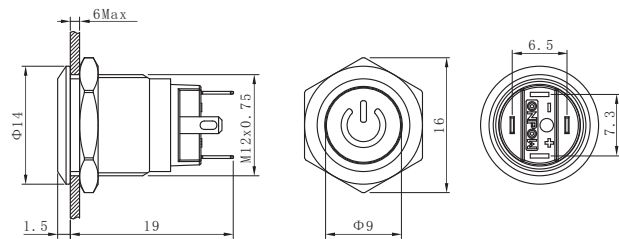
Panel Cutout:  $\Phi 12\text{mm}$   
 Rating: 2A/36VDC  
 Contact Configuration: 1NO  
 Switch Function: Momentary  
 Protection Class: IP67 (FP), IK08  
 Terminal: Pin Terminal (2×0.5mm)  
 Switching: x (Double-break slow-motion contact)  
 Panel Thickness: 1~6mm  
 Torque: About 0.6Nm  
 Mechanical Life: 500,000 cycles  
 Electrical Life: 200,000 cycles  
 Actuator: Stainless steel  
 Body: Stainless steel  
 Base: PA  
 Actuation Force: About 3.5N  
 Actuation Travel: About 1.5mm  
 Compliant

RoHS

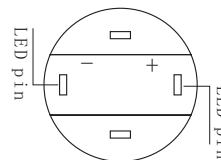
## Performance Characteristic

Operating Temperature	-25°C~+55°C (no freezing) Keep the air flowing
Operating Humidity	45~85%RH (Non condensing)
Contact Resistance	≤50mΩ
Insulation Resistance	≥1000MΩ
Max. withstanding voltage	1500V, AC50Hz, 60s
Vibration resistance	50Hz, amplitude about 1.2mm
Shock resistance	>10g
Solder resistance	320°C (or 30W soldering iron) no more than 2s

## Dimension



## Terminal Arrangement



+, - are lamp terminals, the standard LED has no difference of anode and cathode; Lamp and switch are relatively independent and can use switch or peripheral circuit to control the lamp state.

## Lamp Ratings

Lamp Type	Two-way LED lamp (AC/DC)				
LED Color	R Y O	G B W			
Initial Voltage	AC/DC 1.8V		AC/DC 2.8V		
Life	40000hours (Reference)				
Rated Voltage	AC/DC6V, AC/DC12V, AC/DC24V				
Rated Current	5~15mA				
Dropping Way	6, 12, 24V use internal resistor, others use external resistor				
Lamp Circuit Diagram	Using AC/DC LED lamp, the terminals have no difference of anode and cathode. 				
Note: DC LED and other voltage can be made to order.					
External Resistance Configuration Table (recommended value)	Operating Voltage	6V	12V	24V	36V
	Current-Limiting Resistance	R Y O: 270Ω, 1/4W	820Ω, 1/2W	1.5KΩ, 1W	2.7KΩ, 1W
		G B W: 220Ω, 1/4W	680Ω, 1/2W	1.5KΩ, 1W	2.7KΩ, 1W