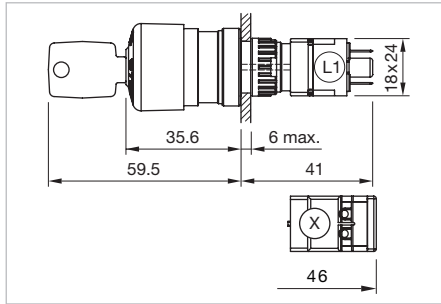


61 Raised design

Stop switch foolproof, IP 65



Product can differ from the current configuration.



Dimensions [mm]
L1 = Solder terminal 2.8 x 0.5 mm,
X = Screw terminal

Equipment consisting of (schematic overview)



Actuator



Fixing nut

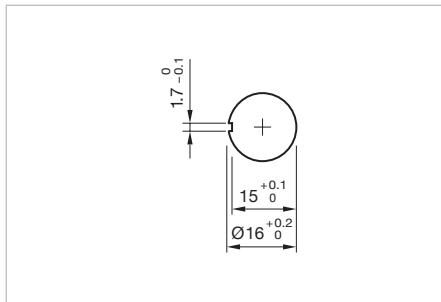


Switching element

page 654

Additional Information



- The standard lock: KABA 1001
- Two keys are supplied with each key lock switch
- Optional lock numbers on request



Mounting cut-outs [mm]

Each Part Number listed below includes all the black components shown in the 3D-drawing.

To obtain a complete unit, please select the red components from the pages shown.



Product attribute	Lens	Marking	Switching action	Part No.	Wiring diagram	Weight
 Stop switch actuator, foolproof, Front dimension Ø 27 mm						
Position indication ring black, twist to unlock clockwise	Plastic grey	Arrows	C	61-3440.4/8	1	0.02 kg
 Stop switch actuator, foolproof, Front dimension Ø 27 mm						
Position indication ring black, key to unlock clockwise	Plastic black		C	61-5441.0/KA	1	0.033 kg

Switching action: C = Maintain

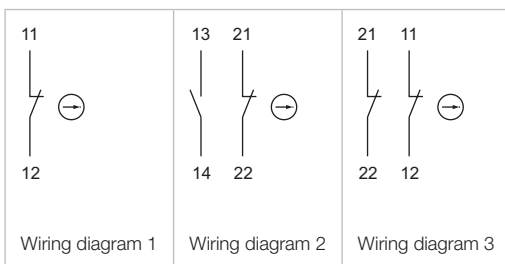


Wiring diagram 1


Switching element E-stop & stop

Switching voltage	Switching current	Switching system	Contacts	Contact material	Terminal	Part No.	Component layout	Wiring diagram	Weight
 <p>Switching element for emergency-stop switch, foolproof EN IEC 60947-5-5</p>									
250 VAC	5 A	Slow-make switching element	1 NC	Silver	Screw	61-8745.11	24	1	0.008 kg
			2 NC	Silver	Screw	61-8755.11	27	3	0.008 kg
			1 NC + 1 NO	Silver	Screw	61-8775.11	25	2	0.008 kg
 <p>Switching element for emergency-stop switch, foolproof EN IEC 60947-5-5</p>									
250 VAC	5 A	Slow-make switching element	1 NC	Silver	Solder 2.8 x 0.5 mm	61-8745.17	35	1	0.008 kg
			2 NC	Silver	Solder 2.8 x 0.5 mm	61-8755.17	37	3	0.008 kg
			1 NC + 1 NO	Silver	Solder 2.8 x 0.5 mm	61-8775.17	36	2	0.008 kg

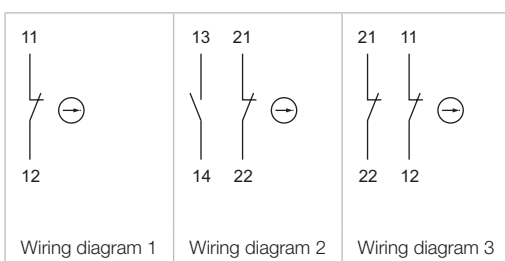
Contacts: NC = Normally closed, NO = Normally open
 The component layouts you will find from page 666



Switching element stop switch


Switching voltage	Switching current	Switching system	Contacts	Contact material	Terminal	Part No.	Component layout	Wiring diagram	Weight
 <p>Switching element for stop switch, foolproof</p>									
42 VAC/DC	0.1 A	Slow-make switching element	1 NC	Gold	Solder 2.8 x 0.5 mm	61-8745.37	35	1	0.008 kg
			2 NC	Gold	Solder 2.8 x 0.5 mm	61-8755.37	37	3	0.008 kg
			1 NC + 1 NO	Gold	Solder 2.8 x 0.5 mm	61-8775.37	36	2	0.008 kg

Contacts: NC = Normally closed, NO = Normally open
 The component layouts you will find from page 666



Emergency-stop switch

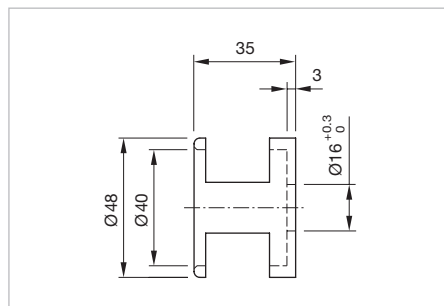
Emergency-stop legend

Dimension	Mounting cut-out	Marking	Colour	Part No.	Weight
	Emergency-stop legend				
Ø 43 x 1.7 mm	Ø 16 mm	without marking	yellow	61-9970.0	0.002 kg
		NOT-AUS	yellow	61-9970.1	0.002 kg
		EMERGENCY-STOP	yellow	61-9970.2	0.002 kg
		ARRET-D'URGENCE	yellow	61-9970.3	0.002 kg
		EMERGENCY-STOP	yellow	61-9970.6	0.002 kg

Emergency-stop protective shroud

Additional Information

- The protection shroud is not suitable for a proper use of emergency-stop. It can obstruct a spontaneous operation of the emergency-stop



Dimensions [mm]

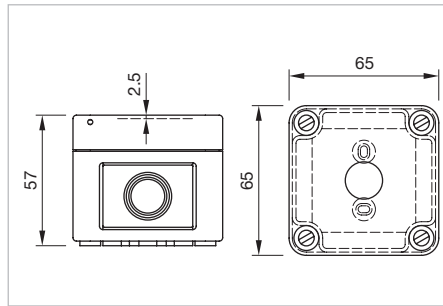
Material	Colour	Part No.	Weight
	Emergency-stop protective shroud		
Aluminium anodised	yellow varnished	61-9965	0.036 kg

61 Accessories


Emergency-stop enclosure, IP 66

Additional Information

- Bottom grey similar RAL 7035; cover lead-sealable, yellow similar RAL 1004
- With mounting cut-out \varnothing 16 mm, without anti-twist device
- Openings for cable gland M16 or M20




Dimensions [mm]

Dimension	Part No.	Weight
 <p>Emergency-stop enclosure</p>		
65 x 65 x 57 mm	61-9480.5	0.099 kg

Cable gland, IP 68

Additional Information

- With traction relief
- With fixing nut


Product attribute	Thread	Material	Colour	Part No.	Weight
 <p>Cable gland</p>					
Clamping range \varnothing 4 ... 10 mm, thread length 8 mm	M16 x 1.5	Plastic	grey	61-9481.6	0.007 kg
Clamping range \varnothing 6 ... 12 mm, thread length 9 mm	M20 x 1.5	Plastic	grey	704.945.6	0.011 kg

61 Accessories

Switching element 3 positions

Additional Information

- We offer a dismantling tool Part No. 61-9711.0 for dismantling of the switching element

Product attribute	Switching voltage	Switching current	Switching system	Contacts	Contact material	Terminal	Art.-Nr.	Component layout	Wiring diagram	Gewicht	
 with lamp terminal	250 VAC	5 A	Snap-action switching element	2 NO	Silver	Solder 2.8 x 0.5 mm	61-8520.12	31	3	0.008 kg	
					Gold	Solder 2.8 x 0.5 mm	61-8520.22	31	3	0.008 kg	
				2 NC	Silver	Solder 2.8 x 0.5 mm	61-8550.12	30	2	0.008 kg	
					Gold	Solder 2.8 x 0.5 mm	61-8550.22	30	2	0.008 kg	
				1 NC + 1 NO	Gold	Solder 2.8 x 0.5 mm	61-8574.22	29	1	0.008 kg	
					Silver	Solder 2.8 x 0.5 mm	61-8574.12	29	1	0.008 kg	
	Slow-make switching element	42 VAC/DC	0.1 A	Slow-make switching element	2 NO	Silver	Solder 2.8 x 0.5 mm	61-8720.17	31	3	0.008 kg
					2 NC	Silver	Solder 2.8 x 0.5 mm	61-8750.17	31	2	0.008 kg
					1 NC + 1 NO	Silver	Solder 2.8 x 0.5 mm	61-8770.17	32	1	0.008 kg
	without lamp terminal	250 VAC	5 A	Slow-make switching element	2 NO	Silver	Screw	61-8725.11	28	6	0.008 kg
					2 NC	Silver	Screw	61-8755.11	27	5	0.008 kg
					1 NC + 1 NO	Silver	Screw	61-8775.11	25	4	0.008 kg

Contacts: NC = Normally closed, NO = Normally open
The component layouts you will find from page 666

