

## Series 57 | Warning Indicator



EAO, the pioneer of illuminated pushbuttons and the expert for innovative, reliable and intuitive human machine interfaces (HMIs) has expanded its Series 57 to include a warning indicator.

The warning indicator is designed for use in public transport, buildings and elevators to make people aware of hazardous situations.

The front is protected to IP69K against damage and has been specifically designed for outdoor use. It shares the same design and dimensions as other products of the Series 57 range. The extra-large lens guarantees optimum 180-degree visibility from all sides. LED illumination is available in red or yellow.

Final assembly does not require any tools, which saves time and money. The Series 57 range is the perfect choice for all rail and bus vehicle builders and the transportation companies who run them.

### Materials

The materials used correspond to EAO's high standards for quality, functional safety, service life and design. They are resistant to cleaning agents and guarantee high UV resistance.

### Mechanical characteristics

- 2-pole cable with end sleeves (wire cross-section, 0.5 mm<sup>2</sup>)
- Cable length: 200 mm; 1000 mm; 2000 mm (other lengths available on request)
- Shock and vibration proof
- Plug connection available on request

### Electrical characteristics

- 20 LEDs, either red or yellow
- Operating voltage
  - 110 VDC ± 30 %
  - 24 VDC ± 30 %
- Current consumption: < 50 mA
- The illumination can vary slightly depending on the particular LED manufacturer

### Applications

- Public transportation: train, tram, bus
- Entrances to buildings: automatic doors
- Elevators

### Environmental conditions

- Temperature
  - Storage temperature: –45°C ... +90°C
  - Operating temperature: –40°C ... +85°C

### Protection class

- IP69K at the front

### Colour of the front ring

- Plastic: Green RAL 6032, red RAL 3000, blue RAL 5015, yellow RAL 1023, grey RAL 7040, black RAL 9017
- Metal: aluminium, naturally anodised

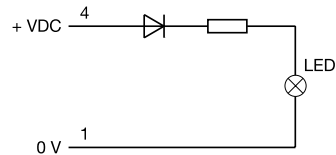
**Standards and directives**

- Declaration of conformity
  - EN 50155
- Cable according to
  - DIN EN 50306-2; VDE 0260-306-2
  - DIN EN 50306-4; VDE 0260-306-4
  - NFF 63808/NFF 61030

**Assembly/replacement**

The mounting dimensions of the 57 series are identical to the dimensions of other manufacturers. As a result, a one-to-one upgrade to the 57 series is easy.

**Circuit diagram**



**Dimensions**

